



# BEVERAGE-AIR

Project: \_\_\_\_\_

AIA#

Item: \_\_\_\_\_

Location: \_\_\_\_\_

SIS#

Approved: \_\_\_\_\_

## DW HORIZONTAL BOTTLE COOLERS

DW49HC Deep Well Series

Hydrocarbon Series

MODEL:  
DW49HC-B-29



DW49HC Deep Well Series: Frosty Brew Bottle Cooler

**3 Year Parts/Labor Warranty**  
**Additional 2 Year Compressor Warranty**

### CABINET CONSTRUCTION

- Exterior construction includes wear-resistant vinyl on steel in black finish
- Interior is galvanized with stainless steel floor
- Full electronic control
- Tops include easy glide, stainless steel lids and stainless steel counter top
- Countertop with integral glass stops
- Three (3) Epoxy coated adjustable wire dividers
- Bottle cap & cap catcher standard
- Forced air refrigeration system holds product between 30° - 32°F
- Constructed with high cooling RPM fans to provide fast cooling



DWHC49-B-29

### OPTIONS & ACCESSORIES

- Stainless steel exterior
- Stainless steel interior
- Wire divider
- Lid Locks
- 3" casters or 6" Adjustable leg with plate
- Remote option

### REFRIGERATION SYSTEM

- Refrigeration system uses R290 refrigerant to comply with all environmental concerns
- Automatic, non-electric defrost
- Epoxy coated evaporator coil



3779 Champion Blvd., Winston-Salem, NC 27105  
1-888-845-9800 Fax: 1-336-245-6453  
Beverage-Air.com sales@bevair.com



# BEVERAGE-AIR

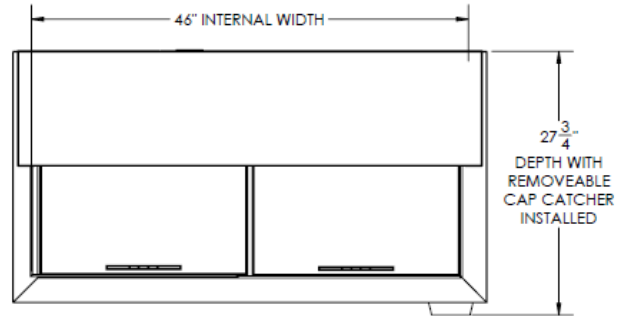
## Horizontal Bottle Coolers

### Deep Well Models

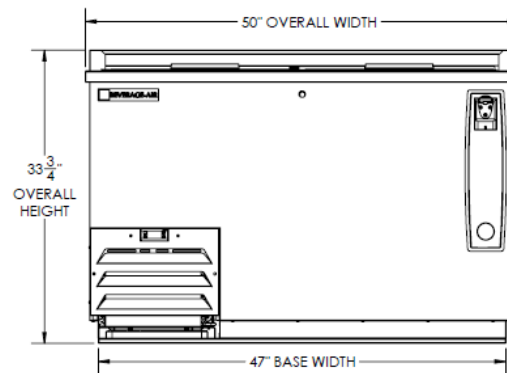
Models: DW49HC-B-29

MODEL	DW49HC-B-29
<b>EXTERNAL DIMENSIONAL DATA</b>	
Width Overall	50"
Depth Overall	26 1/2"
Depth Overall with Cap Catcher	27 3/4"
Height Overall	33 3/4"
Number of Lids	2
<b>INTERNAL DIMENSIONAL DATA</b>	
NET Capacity (cubic ft.)	13.7
Internal Width Overall (in)	46"
Internal Depth Overall (in)	22 3/4"
Internal Height Overall at Step (in)	15 1/2"
Internal Height Overall (in)	26 3/4"
Number of Dividers	3
12 oz. Bottle Capacity	17 1/2 Cases
12 oz. Can Capacity	23 3/4 Cases
<b>ELECTRICAL DATA</b>	
Full Load Amperes 115/60/1	2.5
<b>REFRIGERATION DATA</b>	
Horsepower	1/4
Capacity (BTU/Hr)*	1702
<b>WEIGHT DATA</b>	
Gross Weight (Crated lbs)	272 lbs
Height - Crated	40"
Width - Crated	53"
Depth - Crated	29 1/2"

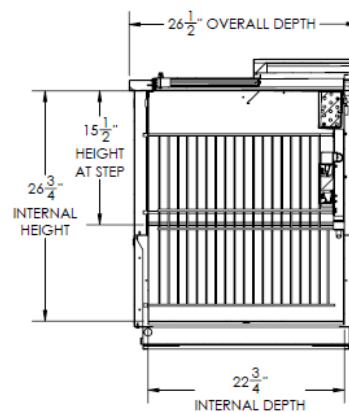
### Model Views



### Plan View



### Elevation View



### Side View

### ELECTRICAL CONNECTION



115/60/1  
NEMA-5-15P

Units pre-wired at factory and include 8' long cord and plug set.



an Ali Group Company



The Spirit of Excellence

3779 Champion Blvd., Winston-Salem, NC 27105  
1-888-845-9800 Fax: 1-336-245-6453  
Beverage-Air.com sales@bevair.com