



# BEVERAGE-AIR

Project: \_\_\_\_\_

AIA#

Item: \_\_\_\_\_

Location: \_\_\_\_\_

SIS#

Approved: \_\_\_\_\_

## DW HORIZONTAL BOTTLE COOLERS

DW49HC Deep Well Series

Hydrocarbon Series

**MODEL:  
DW49HC-B**

DW49HC Deep Well Series: Horizontal Bottle Cooler

**3 Year Parts/Labor Warranty  
Additional 2 Year Compressor Warranty**

### CABINET CONSTRUCTION



DWHC49-B

- Exterior construction includes wear-resistant vinyl on steel in black finish
- Interior is galvanized with stainless steel floor
- Full electronic control
- Tops include easy glide, stainless steel lids and stainless steel counter top
- Countertop with integral glass stops
- Three (3) Epoxy coated adjustable wire dividers
- Bottle cap & cap catcher standard
- Forced air refrigeration system holds product between 36° - 40°F
- Constructed with high cooling RPM fans to provide fast cooling

### OPTIONS & ACCESSORIES

- Stainless steel exterior
- Stainless steel interior
- Lid Locks
- 3" casters or 6" Adjustable leg with plate
- Wine temperature models available

### REFRIGERATION SYSTEM

- Refrigerant is R290 to comply with all environmental safety concerns
- Self-defrosting evaporator
- Automatic, non-electric evaporator
- Evaporator coil is coated in



3779 Champion Blvd., Winston-Salem, NC 27105  
1-888-845-9800 Fax: 1-336-245-6453  
Beverage-Air.com sales@bevair.com



# BEVERAGE-AIR

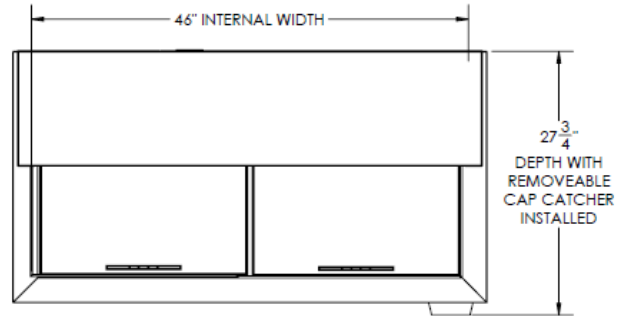
## Horizontal Bottle Coolers

### Deep Well Models

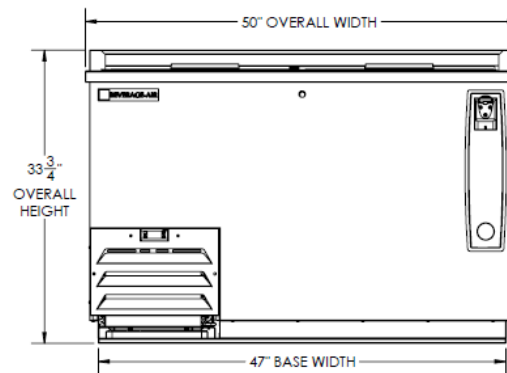
Models: DW49HC-B

| MODEL                                | DW49HC-B     |
|--------------------------------------|--------------|
| <b>EXTERNAL DIMENSIONAL DATA</b>     |              |
| Width Overall                        | 50"          |
| Depth Overall                        | 26 1/2"      |
| Depth Overall with Cap Catcher       | 27 3/4"      |
| Height Overall                       | 33 3/4"      |
| Number of Lids                       | 2            |
| <b>INTERNAL DIMENSIONAL DATA</b>     |              |
| NET Capacity (cubic ft.)             | 13.7         |
| Internal Width Overall (in)          | 46"          |
| Internal Depth Overall (in)          | 22 3/4"      |
| Internal Height Overall at Step (in) | 15 1/2"      |
| Internal Height Overall (in)         | 26 3/4"      |
| Number of Dividers                   | 3            |
| 12 oz. Bottle Capacity               | 17 1/2 Cases |
| 12 oz. Can Capacity                  | 23 3/4 Cases |
| <b>ELECTRICAL DATA</b>               |              |
| Full Load Amperes 115/60/1           | 2.5          |
| <b>REFRIGERATION DATA</b>            |              |
| Horsepower                           | 1/4          |
| Capacity (BTU/Hr)*                   | 1702         |
| <b>WEIGHT DATA</b>                   |              |
| Gross Weight (Crated lbs)            | 286 lbs      |
| Height - Crated                      | 40"          |
| Width - Crated                       | 53"          |
| Depth - Crated                       | 29 1/2"      |

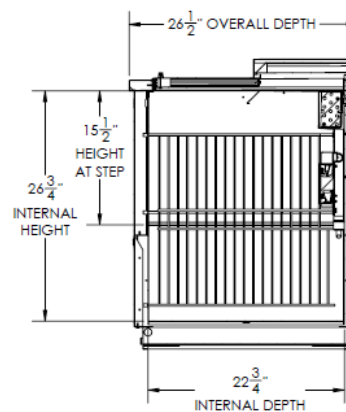
### Model Views



### Plan View



### Elevation View



### Side View

### ELECTRICAL CONNECTION



115/60/1  
NEMA-5-15P

Units pre-wired at factory and include 8' long cord and plug set.



an Ali Group Company



The Spirit of Excellence

3779 Champion Blvd., Winston-Salem, NC 27105  
1-888-845-9800 Fax: 1-336-245-6453  
Beverage-Air.com sales@bevair.com