



BEVERAGE-AIR

| | |
|-----------------|------|
| Project: _____ | AIA# |
| Item: _____ | |
| Location: _____ | SIS# |
| Approved: _____ | |

HORIZONTAL BOTTLE COOLERS

MODEL:
DW49HC-B

DW49HC Deep Well Series
Hydrocarbon Series

DW49HC Deep Well Series: Horizontal Bottle Coolers

3 Year Parts/Labor Warranty
Additional 4 Year Compressor Warranty



CABINET CONSTRUCTION

- Exterior construction includes wear-resistant vinyl on steel in black finish
- Galvanized steel interior and floor
- Full electronic control
- Tops include easy glide, stainless steel lids and stainless steel countertop
- Countertop with integral glass stops
- Three (3) epoxy coated adjustable wire dividers
- Bottle opener and cap catcher standard
- Constructed with high cooling RPM fans to provide fast cooling

OPTIONS & ACCESSORIES

- Stainless steel exterior
- Stainless steel interior
- Wire divider
- Lid locks
- 3" Casters or 6" adjustable leg with plate
- Remote option* (see note on back on page)

REFRIGERATION SYSTEM

- Refrigeration system uses R290 refrigerant to comply with all environmental concerns
- Automatic, non-electric defrost
- Epoxy coated evaporator coil
- Forced air refrigeration system holds product between 36°- 40°F




Please verify qualifying units by visiting:
www.energystar.gov/cfs

3779 Champion Blvd., Winston-Salem, NC 27105
1-888-845-9800 Fax: 1-336-245-6453
Beverage-Air.com Sales@bevair.com



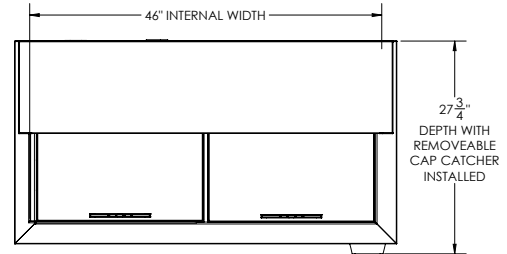
BEVERAGE-AIR®

| MODEL | DW49HC-B |
|--------------------------------------|------------|
| EXTERNAL DIMENSIONAL DATA | |
| Width Overall | 50" |
| Depth Overall | 26 ½" |
| Depth Overall with Cap Catcher | 27 ¾" |
| Height Overall | 33 ¾" |
| Number of Lids | 2 |
| INTERNAL DIMENSIONAL DATA | |
| NET Capacity (cubic ft.) | 13.7 |
| Internal Width Overall (in) | 46" |
| Internal Depth Overall (in) | 22 ¾" |
| Internal Height Overall at Step (in) | 15 ½" |
| Internal Height Overall (in) | 26 ¾" |
| Number of Dividers | 3 |
| 12 oz. Bottle Capacity | 17 ½ Cases |
| 12 oz. Can Capacity | 23 ¾ Cases |
| ELECTRICAL DATA | |
| Full Load Amperes | 2.5 |
| REFRIGERATION DATA | |
| Horsepower | 1/4 |
| Capacity (BTU/Hr) | 1702 |
| SHIPPING DATA | |
| Gross Weight - Crated | 272 lbs |
| Height - Crated | 41" |
| Width - Crated | 52" |
| Depth - Crated | 30" |

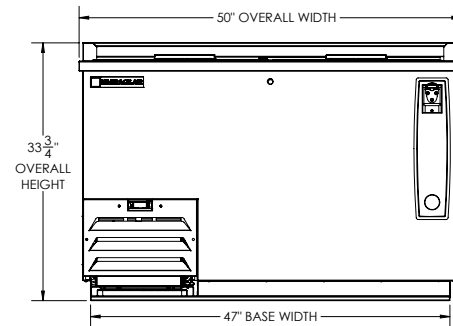
*NOTE: Remote units are field wired and come with 6" legs.
Refrigerant must be specified at time of order.

Horizontal Bottle Coolers - Deep Well Model: DW49HC-B

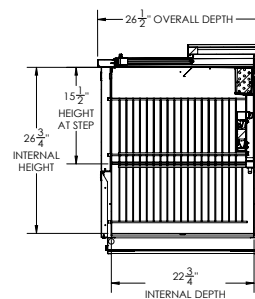
Model Views



PLAN VIEW



ELEVATION VIEW



SIDE VIEW



*ELECTRICAL CONNECTION



115/60/1
NEMA 5-15P

Units pre-wired at factory
and include 8' long cord
and plug set.

3779 Champion Blvd., Winston-Salem, NC 27105 1-888-845-9800 Fax: 1-336-245-6453 Beverage-Air.com Sales@bevair.com

an Ali Group Company



The Spirit of Excellence