



# BEVERAGE-AIR®

## 2024 PRODUCT OVERVIEW





# BEVERAGE-AIR

## OUR MISSION



Beverage-Air® is dedicated to being the global brand leader in every market we serve. Leveraging our heritage of industry leadership, exceptional product quality, and unmatched innovation, we offer a comprehensive range of refrigeration and food service equipment to meet a variety of industry needs. Our goal is to design equipment engineered for success through exceptional products and excellent service to our customers around the world. We consider their successes as a measure of our own, and relentlessly strive to deliver the best possible solutions to exceed their expectations.

## LEGEND

Example: **BEV UCR27 (UCR27AHC-24-23)**

<b>BEV</b>	Beverage-Air
<b>UCR</b>	Undercounter Refrigerator
<b>27</b>	Width
<b>UCR27AHC-24-23</b>	Beverage-Air Model #
<b>-17</b>	6" Legs
<b>-23</b>	3" Casters
<b>-24</b>	Left Hand Hinge
<b>-25</b>	Glass Door
<b>-53</b>	Reinforced Door With Shoulder Bolts
<b>-SR</b>	Syrup Rail McCafe Unit

## LEGEND

Example: **BEV RI/RID (RI18HC-HS-26)**

<b>BEV</b>	Beverage-Air
<b>RI</b>	Reach In Refrigerator
<b>18</b>	Width
<b>RI18HC-HS-26</b>	Beverage-Air Model #
<b>-15</b>	Right Hand Hinged
<b>-18</b>	Left Hand Hinged
<b>-BO</b>	Breakfast Optimization Pin Sleeve/Cord
<b>-HG</b>	Half Glass Doors
<b>-HGS</b>	Half Glass/Half Solid Doors
<b>-HS</b>	Half Solid Doors

## McDonald's Dedicated Account Team

**Scott Ricker**  
*McDonald's Sales Consultant*

Cell: 630.302.2232  
Email: [scott@sdrideas.com](mailto:scott@sdrideas.com)

**Ryan Ricker**  
*Vice President Sales & Marketing*

Beverage-Air  
3779 Champion Blvd.  
Winston-Salem, NC 27105  
Cell: 630.564.7926  
Email: [rricker@alirefna.com](mailto:rricker@alirefna.com)

**Will Means**  
*President*

Ali Refrigeration NA 3779  
Champion Blvd. Winston-Salem, NC 27105  
Phone: 336.245.6405  
Email: [wmeans@alirefna.com](mailto:wmeans@alirefna.com)

*McDonald's Customer Service Team*  
**Debra Goins**

Phone: 336.245.6464  
Email: [dgoins@alirefna.com](mailto:dgoins@alirefna.com)

**Alex Vogler**  
*McDonald's Technical Service Manager*

Beverage-Air  
3779 Champion Blvd.  
Winston-Salem, NC 27105  
Phone: 336.245.6449  
E-Mail: [avogler@alirefna.com](mailto:avogler@alirefna.com)

**Kevin Arrieta**  
*McDonald's Technical Service Specialist*

Beverage-Air  
3779 Champion Blvd.  
Winston-Salem, NC 27105  
Phone: 800.684.1199  
Fax: 800.262.9381  
Email: [karrieta@alirefna.com](mailto:karrieta@alirefna.com)



**BEVERAGE-AIR**

## McDonald's Dedicated Account Team

### **Franke Foodservice Supply**

800 Aviation Parkway  
Smyrna, TN 37167  
Toll Free: 800.423.5247  
Tech/Warranty: 800.537.2653 Opt. 2  
Phone: 615.462.4000  
Fax: 877.538.6882  
www.frankesupply.com

### **H & K Dallas**

2200 Skyline Drive  
Mesquite, TX 75149  
Toll Free: 800.788.2445  
Phone: 214.818.3500  
Fax: 214.818.3544  
www.HKI.com

### **Ken's Beverage**

10015 South Mandel  
Plainfield, IL 60585  
Toll Free: 800.825.2292  
Phone: 630.904.1555  
Fax: 630.904.1559  
www.kensbeverage.com

### **H & K International**

2176 Diehl Road  
Aurora, IL 60502  
Toll Free: 800.521.3987  
Phone: 248.293.5559  
Fax: 248.293.5109  
www.HKI.com

---

### **3 Year Warranty / Additional 4 Year Compressor Warranty**

---

For Warranty Service, Call Our  
Warranty Service Center phone  
1.877.866.1223

### **H & K Canada**

50 Mccleary CT  
Concord, Ontario L4K 3L5  
Phone: 905.695.0440 Fax:  
905.695.0450  
www.HKI.com





# BEVERAGE-AIR

Project: _____	AIA#
Item: _____	
Location: _____	SIS#
Approved: _____	

## TOP MOUNTED CROSS-TEMP®

MODEL:  
CT1HC-1HS

CT1HC Half-Solid Door Variable Speed Freezer/Refrigerator  
Hydrocarbon Series



**3 Year Parts/Labor Warranty**  
**Additional 4 Year Compressor Warranty**

### CABINET CONSTRUCTION

- Exterior is stainless steel front with continuous coil coated sides
- Interior liner is made of corrosion resistant aluminum
- Door locks
- Expansion valve technology
- Easily converts from refrigerator to freezer
- Single cabinet configurable to all menu initiatives, temperature range of -15 to 40° F
- Modulates coil temp to achieve desired set point
- Intuitive compressor
- Quicker pull-down
- Improved product stability
- Rapid recovery defrost
- Field reversible doors
- Three (3) epoxy coated shelves
- 6" Casters with (2) brakes

### OPTIONS & ACCESSORIES

- Stainless steel exterior
- Stainless steel interior
- Stainless steel tray (A)
- Stainless steel
- Universal tray slide (AC)
- Epoxy coated wire rod tray slide (kit #4)
- Additional shelves
- Left hand hinged
- 3" Casters
- 6" Flanged legs

### REFRIGERATION SYSTEM

- Uses environmentally friendly, energy efficient R290 refrigerant, and meets all regulatory requirements for CARB, SNAP, DOE & more
- Variable speed compressor technology achieve 30% more energy efficiency
- Adaptive defrost
- Epoxy coated evaporator coil

CT1HC TOP MOUNTED CROSS-TEMP®



  
Please verify qualifying units by visiting:  
[www.energystar.gov/cfs](http://www.energystar.gov/cfs)

3779 Champion Blvd., Winston-Salem, NC 27105  
1-888-845-9800 Fax: 1-336-245-6453  
Beverage-Air.com Sales@bevair.com



# BEVERAGE-AIR

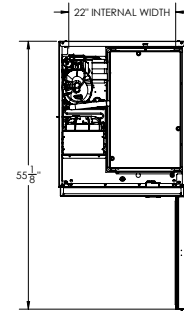
## Cross Temp® Top Mount Freezer/Refrigerator Model: CT1HC-1HS

MODEL	CT1HC-1HS
<b>EXTERNAL DIMENSIONAL DATA</b>	
Width Overall	26"
Depth Overall with Handles	33 5/8"
Height Overall	85"
Number of Doors	2
Depth with Door Open 90°	55 1/8"
Door Opening (in)	21 5/8" x 29 5/8"
<b>INTERNAL DIMENSIONAL DATA</b>	
NET Capacity (cubic ft.)	23.1
Internal Width Overall (in)	22"
Internal Depth Overall (in)	26 1/8"
Internal Height Overall (in)	62"
Number of Shelves	3
<b>ELECTRICAL DATA</b>	
Full Load Amperes 115/60/1*	8.0
<b>REFRIGERATION DATA</b>	
Horsepower	4/5
Capacity (BTU/Hr)	1970 - 4950
<b>SHIPPING DATA</b>	
Gross Weight - Crated	342 lbs
Height - Crated	88"
Width - Crated	41"
Depth - Crated	33"

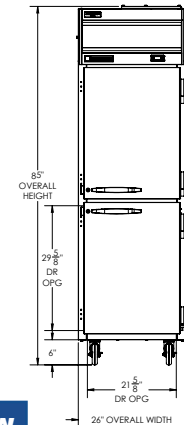
NOTE: Remote units are field wired and come with 6" legs.  
Refrigerant must be specified at time of order.

### Model Views

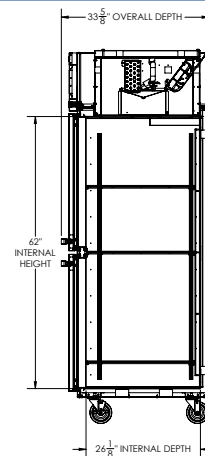
Required Clearance: Top 12", Rear 3"



### PLAN VIEW



### ELEVATION VIEW



### SIDE VIEW

### ELECTRICAL CONNECTION



115/60/1\*  
NEMA 5-15P

Unit pre-wired at  
factory and include  
8' long cord and  
plug set.

\* NOTE: This unit utilizes variable speed compressor technology. The compressor can experience nuisance tripping on Class A GFCI outlets which have a trip limit of 4 mA to 6 mA. To avoid this issue in a location that requires GFCI circuit protection, Beverage-Air recommends using a HUBBELL Model Number GFRST83W 20A Heavy Duty Hospital Grade Self-Test GFCI Receptacle.



3779 Champion Blvd., Winston-Salem, NC 27105 1-888-845-9800 Fax: 1-336-245-6453 Beverage-Air.com Sales@bevair.com

an Ali Group Company



The Spirit of Excellence



# BEVERAGE-AIR

Project: _____	AIA#
Item: _____	
Location: _____	SIS#
Approved: _____	

## HORIZON TOP MOUNT REACH-IN

HF1HC Reach-in Freezer  
Hydrocarbon Series

MODEL:  
HF1HC-1HS



**3 Year Parts/Labor Warranty**  
**Additional 4 Year Compressor Warranty**

### CABINET CONSTRUCTION

- Exterior is stainless steel front and gray painted sides
- Interior liner is made of corrosion resistant aluminum
- Full electronic control
- Expansion valve technology
- One piece grille
- LED interior light
- Self-closing door with 120° stay-open feature, on cam-lift hinges
- Field reversible doors
- Snap-In magnetic gaskets for positive door seal
- Anti-microbial door handle
- Heavy-duty epoxy coated wire shelves
- 6" Heavy-duty casters, two (2) with brakes

### OPTIONS & ACCESSORIES

- Tray slide pair, 1 tray slide set for (1) 18" x 26" or (2) 14" x 18" pans (A)
- Stainless steel universal tray slide pair, 1 tray slide set for (1) 18" x 26" or (2) 14" x 18" pans (AC)
- Tray slide mounting hardware kit #4 (slides not included)
- Additional epoxy shelves
- Shelf clips
- Door locks
- Stainless steel breaker
- 6" Legs seismic/flanged
- 3" Casters
- Remote option\* (see note on back page)

### REFRIGERATION SYSTEM

- Uses environmentally friendly, energy efficient R290 refrigerant, and meets all regulatory requirements for CARB, SNAP, DOE & more
- Hot gas condensate evaporator
- Adaptive Defrost
- Epoxy coated evaporator coil
- Freezer capable of maintaining product temperature down to -10°F

**HF1HC TOP MOUNT REACH-IN FREEZER**



  
Please verify qualifying units by visiting:  
[www.energystar.gov/cfs](http://www.energystar.gov/cfs)

3779 Champion Blvd., Winston-Salem, NC 27105  
1-888-845-9800 Fax: 1-336-245-6453  
Beverage-Air.com Sales@bevair.com



# BEVERAGE-AIR

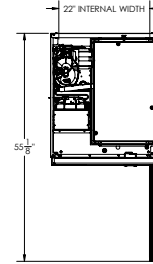
MODEL	HF1HC-1HS
<b>EXTERNAL DIMENSIONAL DATA</b>	
Width Overall	26"
Depth Overall with Handle	33 5/8"
Height Overall	85"
Number of Doors	2
Depth with Door Open 90°	55 1/8"
Door Opening (in)	21 5/8" x 29 5/8"
<b>INTERNAL DIMENSIONAL DATA</b>	
NET Capacity (cubic ft.)	21.06
Internal Width Overall (in)	22"
Internal Depth Overall (in)	26 1/8"
Internal Height Overall (in)	62"
Number of Shelves	3
<b>ELECTRICAL DATA</b>	
Full Load Amperes 115/60/1	11.0
<b>REFRIGERATION DATA</b>	
Horsepower*	3/4
Capacity (BTU/Hr)*	1927
<b>WEIGHT DATA</b>	
Gross Weight	345 lbs
Height - Crated	88"
Width - Crated	41"
Depth - Crated	33"

\*NOTE: Remote units are field wired and comes with 6" legs.  
Refrigerant must be specified at time of order.

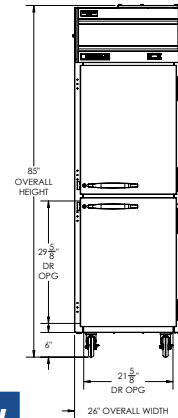
## Top Mount Reach-In Freezer Model: HF1HC-1HS

### Model Views

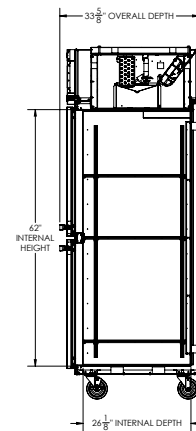
Required Clearance: Top 12", Rear 3", Sides 0"



### PLAN VIEW



### ELEVATION VIEW



### SIDE VIEW

### \*ELECTRICAL CONNECTION



115/60/1  
NEMA 5-15P

Units pre-wired at factory  
and include 8' long cord  
and plug set.



3779 Champion Blvd., Winston-Salem, NC 27105 1-888-845-9800 Fax: 1-336-245-6453 Beverage-Air.com Sales@bevair.com

an Ali Group Company



The Spirit of Excellence



# BEVERAGE-AIR

Project: _____	AIA#
Item: _____	
Location: _____	SIS#
Approved: _____	

## HORIZON TOP MOUNT REACH-IN

MODEL:  
HR1HC-1HS

HR1HC Reach-in Refrigerators  
Hydrocarbon Series



**3 Year Parts/Labor Warranty**  
**Additional 4 Year Compressor Warranty**

### CABINET CONSTRUCTION

- Exterior is stainless steel front and gray painted sides
- Interior liner is made of corrosion resistant aluminum
- Full electronic control
- One piece grille
- LED interior light
- Self-closing door with 120° stay-open feature, on cam-lift hinges
- Field reversible doors
- Snap-In magnetic gaskets for positive door seal
- Anti-microbial door handle
- Heavy-duty epoxy coated wire shelves
- 6" Heavy-duty casters, two (2) with brakes

### OPTIONS & ACCESSORIES

- Tray slide pair, 1 tray slide set for (1) 18" x 26" or (2) 14" x 18" pans (A)
- Stainless steel universal tray slide pair, 1 tray slide set for (1) 18" x 26" or (2) 14" x 18" pans (AC)
- Tray slide mounting hardware kit #4 (slides not included)
- Additional epoxy shelves
- Shelf clips
- Door locks
- Stainless steel breaker
- 6" Legs seismic/flanged
- 3" Casters
- Remote option\* (see note on back page)

### REFRIGERATION SYSTEM

- Uses environmentally friendly, energy efficient R290 refrigerant, and meets all regulatory requirements for CARB, SNAP, DOE & more
- Hot gas condensate evaporator
- Adaptive Defrost
- Epoxy coated evaporator coil
- Maintains product temperatures between 36°F and 38°F

HR1HC TOP MOUNT REACH-IN REFRIGERATOR



  
Please verify qualifying units by visiting:  
[www.energystar.gov/cfs](http://www.energystar.gov/cfs)

3779 Champion Blvd., Winston-Salem, NC 27105  
1-888-845-9800 Fax: 1-336-245-6453  
Beverage-Air.com Sales@bevair.com





# BEVERAGE-AIR

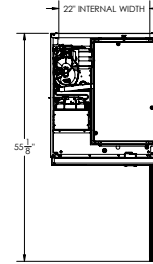
MODEL	HR1HC-1HS
<b>EXTERNAL DIMENSIONAL DATA</b>	
Width Overall	26"
Depth Overall with Handle	33 5/8"
Height Overall	85"
Number of Doors	2
Depth with Door Open 90°	55 1/8"
Door Opening (in)	21 5/8" x 29 5/8"
<b>INTERNAL DIMENSIONAL DATA</b>	
NET Capacity (cubic ft.)	21.17
Internal Width Overall (in)	22"
Internal Depth Overall (in)	26 1/8"
Internal Height Overall (in)	62"
Number of Shelves	3
<b>ELECTRICAL DATA</b>	
Full Load Amperes 115/60/1	2.7
<b>REFRIGERATION DATA</b>	
Horsepower*	1/4
Capacity (BTU/Hr)*	1702
<b>WEIGHT DATA</b>	
Gross Weight	345 lbs
Height - Crated	88"
Width - Crated	41"
Depth - Crated	33"

\*NOTE: Remote units are field wired and comes with 6" legs.  
Refrigerant must be specified at time of order.

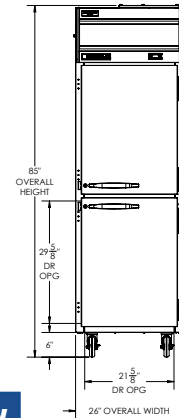
## Top Mount Reach-In Refrigerator Model: HR1HC-1HS

### Model Views

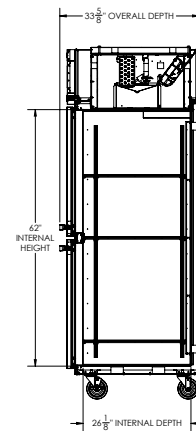
Required Clearance: Top 12", Rear 3", Sides 0"



### PLAN VIEW



### ELEVATION VIEW



### SIDE VIEW

### \*ELECTRICAL CONNECTION



115/60/1  
NEMA 5-20P

Units pre-wired at factory  
and include 8' long cord  
and plug set.



3779 Champion Blvd., Winston-Salem, NC 27105 1-888-845-9800 Fax: 1-336-245-6453 Beverage-Air.com Sales@bevair.com

an Ali Group Company



The Spirit of Excellence



# BEVERAGE-AIR

Project: \_\_\_\_\_

AIA#

Item: \_\_\_\_\_

Location: \_\_\_\_\_

SIS#

Approved: \_\_\_\_\_

## RI REACH-IN REFRIGERATORS

### RI18HC Half Glass Door Bottom Mount Hydrocarbon Series

**MODELS:**  
RI18HC-HG-26



RI18HC-HG-26

**3 Year Parts/Labor Warranty**  
**Additional 4 Year Compressor Warranty**

### CABINET CONSTRUCTION

- Stainless steel exterior and interior
- Full electronic control
- Interior LED Light
- Bottle cartridge kit
- Five (5) shelves standard, long tab clips provided for slanted feature
- One piece grille
- Cartridge style hinges
- 120° hold open feature
- Snap-in magnetic door gasket
- Anti-Microbial door handles
- 3" Heavy duty casters standard

### OPTIONS & ACCESSORIES

- 6" legs optional
- RI18HC-HG-26 right hand hinged door (standard)
- RI18HC-HG-26-18 left hand hinged door

### REFRIGERATION SYSTEM

- Refrigeration system uses R290 refrigerant to comply with all environmental concerns
- Automatic, non-electric evaporator
- Epoxy coated evaporator coil

RI18HC BOTTOM MOUNT REACH-INS: RI Series Models



3779 Champion Blvd., Winston-Salem, NC 27105  
1-888-845-9800 Fax: 1-336-245-6453  
Beverage-Air.com sales@bevair.com



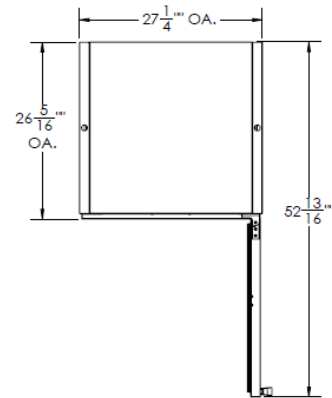
# BEVERAGE-AIR

## Bottom Mount Reach-In Half Glass Door

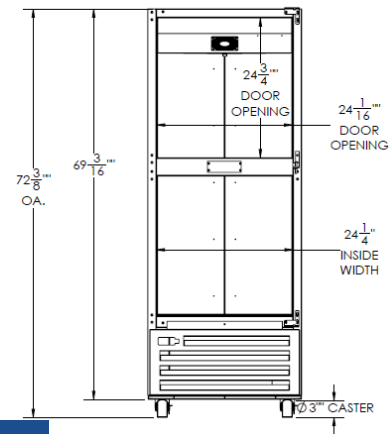
Models: RI18HC-HG-26

MODEL	RI18HC-HG-26
<b>EXTERNAL DIMENSIONAL DATA</b>	
Width Overall	27 1/4"
Depth Overall with Handle	29 1/4"
Height Overall with 3" Casters	72 3/8"
Number of Doors	2
Depth with Door Open 90°	52 13/16"
Door Opening (inches)	24 3/4" x 24 1/16"
Shelf Area	501 3/16"
<b>INTERNAL DIMENSIONAL DATA</b>	
NET Capacity (cubic ft.)	16.85
Internal Width Overall (in)	24 1/4"
Internal Depth Overall (in)	23 7/8"
Internal Height Overall—(in)	Front 52 15/16" Rear 46 11/16"
Number of Shelves	5
<b>ELECTRICAL DATA</b>	
Full Load Amperes 115/60/1	5.5
<b>REFRIGERATION DATA</b>	
Horsepower	1/4
Capacity (BTU/Hr)*	1997
<b>WEIGHT DATA</b>	
Gross Weight Lbs	334 lbs
Height - Crated	75"
Width - Crated	30"
Depth - Crated	31 1/2"

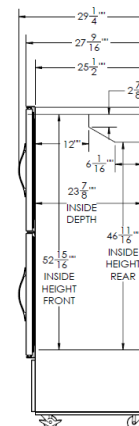
### Model Views



Plan View



Elevation View



Side View

### ELECTRICAL CONNECTION



Units pre-wired at factory and include 8' long cord and plug set.



an Ali Group Company



3779 Champion Blvd., Winston-Salem, NC 27105  
1-888-845-9800 Fax: 1-336-245-6453



# BEVERAGE-AIR

Project: \_\_\_\_\_

AIA#

Item: \_\_\_\_\_

Location: \_\_\_\_\_

SIS#

Approved: \_\_\_\_\_

## RI REACH-IN REFRIGERATORS

RI18HC Half Solid Half Glass Door Bottom Mount  
Hydrocarbon Series

**MODELS:**  
RI18HC-HGS-26



RI18HC-HGS-26

**3 Year Parts/Labor Warranty**  
**Additional 4 Year Compressor Warranty**

### CABINET CONSTRUCTION

- Stainless steel exterior and interior
- Full electronic control
- Interior LED Light
- Bottle cartridge kit
- Five (5) shelves standard, long tab clips provided for slanted feature
- One piece grille
- Cartridge style hinges
- 120° hold open feature
- Snap-in magnetic door gasket
- Anti-Microbial door handles
- 3" Heavy duty casters standard
- Maintains temperature between 36° - 38°F

### OPTIONS & ACCESSORIES

- 6" legs optional
- RI18HC-HGS-26 right hand hinged door (standard)
- RI18HC-HGS-26-18 left hand hinged door

### REFRIGERATION SYSTEM

- Refrigeration system uses R290 refrigerant to comply with all environmental concerns
- Automatic, non-electric evaporator
- Epoxy coated evaporator coil

RI18HC BOTTOM MOUNT REACH-INS: RI Series Models



3779 Champion Blvd., Winston-Salem, NC 27105  
1-888-845-9800 Fax: 1-336-245-6453  
Beverage-Air.com sales@bevair.com



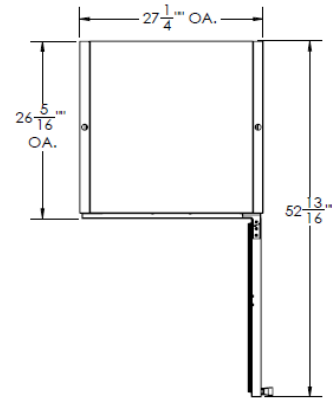
# BEVERAGE-AIR

## Bottom Mount Reach-In Half Solid Half Glass Door

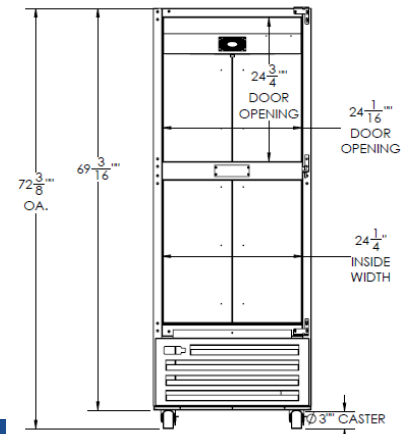
Models: RI18HC-HGS-26

MODEL	RI18HC-HGS-26
<b>EXTERNAL DIMENSIONAL DATA</b>	
Width Overall	27 1/4"
Depth Overall with Handle	29 1/4"
Height Overall with 3" Casters	72 3/8"
Number of Doors	2
Depth with Door Open 90°	52 13/16"
Door Opening (inches)	24 3/4" x 24 1/16"
Shelf Area	501 3/16"
<b>INTERNAL DIMENSIONAL DATA</b>	
NET Capacity (cubic ft.)	16.85
Internal Width Overall (in)	24 1/4"
Internal Depth Overall (in)	23 7/8"
Internal Height Overall—(in)	Front 52 15/16" Rear 46 11/16"
Number of Shelves	5
<b>ELECTRICAL DATA</b>	
Full Load Amperes 115/60/1	5.5
<b>REFRIGERATION DATA</b>	
Horsepower	1/4
Capacity (BTU/Hr)*	1997
<b>WEIGHT DATA</b>	
Gross Weight Lbs	334 lbs
Height - Crated	75"
Width - Crated	30"
Depth - Crated	31 1/2"

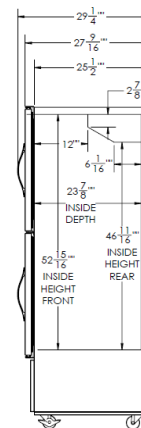
### Model Views



Plan View



Elevation View



Side View

### ELECTRICAL CONNECTION



115/60/1  
NEMA-5-15P

Units pre-wired at factory and include 8' long cord and plug set.



an Ali Group Company



The Spirit of Excellence

3779 Champion Blvd., Winston-Salem, NC 27105  
1-888-845-9800 Fax: 1-336-245-6453



# BEVERAGE-AIR

Project: \_\_\_\_\_

AIA#

Item: \_\_\_\_\_

Location: \_\_\_\_\_

SIS#

Approved: \_\_\_\_\_

## RI REACH-IN REFRIGERATORS

RI18HC Half Solid Door Bottom Mount  
Hydrocarbon Series

**MODELS:**  
RI18HC-HS-26



RI18HC-HS-26

**3 Year Parts/Labor Warranty  
Additional 4 Year Compressor Warranty**

### CABINET CONSTRUCTION

- Stainless steel exterior and interior
- Full electronic control
- Interior LED Light
- Bottle cartridge kit
- Five (5) shelves standard, long tab clips provided for slanted feature
- One piece grille
- Cartridge style hinges
- 120° hold open feature
- Snap-in magnetic door gasket
- Anti-Microbial door handles
- 3" Heavy duty casters standard
- Maintains temperature between 36° - 38°F

### OPTIONS & ACCESSORIES

- 6" legs optional
- RI18HC-HS-26 right hand hinged door (standard)
- RI18HC-HS-26-18 left hand hinged door

### REFRIGERATION SYSTEM

- Refrigeration system uses R290 refrigerant to comply with all environmental concerns
- Automatic, non-electric evaporator
- Epoxy coated evaporator coil

RI18HC BOTTOM MOUNT REACH-INS: RI Series Models



3779 Champion Blvd., Winston-Salem, NC 27105  
1-888-845-9800 Fax: 1-336-245-6453  
Beverage-Air.com sales@bevair.com



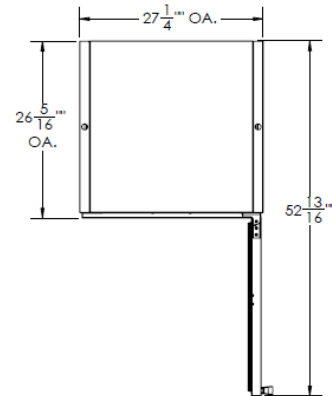
# BEVERAGE-AIR

## Bottom Mount Reach-In Half Solid Door

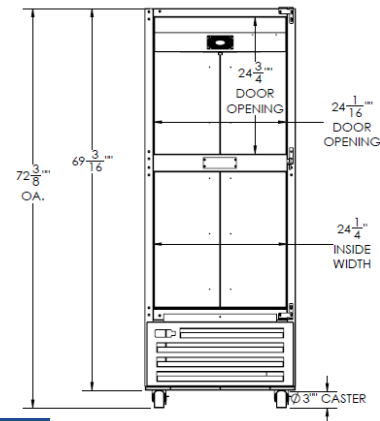
Models: RI18HC-HS-26

MODEL	RI18HC-HS-26
<b>EXTERNAL DIMENSIONAL DATA</b>	
Width Overall	27 1/4"
Depth Overall with Handles	29 1/4"
Height Overall with 3" Casters	72 3/8"
Number of Doors	2
Depth with Door Open 90°	52 13/16"
Door Opening (inches)	24 3/4" x 24 1/16"
Shelf Area	501 3/16"
<b>INTERNAL DIMENSIONAL DATA</b>	
NET Capacity (cubic ft.)	16.85
Internal Width Overall (in)	24 1/4"
Internal Depth Overall (in)	23 7/8"
Internal Height Overall—(in)	Front 52 15/16" Rear 46 11/16"
Number of Shelves	5
<b>ELECTRICAL DATA</b>	
Full Load Amperes 115/60/1	5.5
<b>REFRIGERATION DATA</b>	
Horsepower	1/4
Capacity (BTU/Hr)*	1997
<b>WEIGHT DATA</b>	
Gross Weight Lbs	328 lbs
Height - Crated	74"
Width - Crated	30"
Depth - Crated	32"

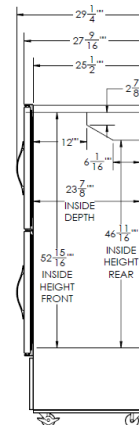
### Model Views



Plan View



Elevation View



Side View

### ELECTRICAL CONNECTION



115/60/1  
NEMA-5-15P

Units pre-wired at factory and include 8' long cord and plug set.



an Ali Group Company



The Spirit of Excellence

3779 Champion Blvd., Winston-Salem, NC 27105  
1-888-845-9800 Fax: 1-336-245-6453



# BEVERAGE-AIR

Project: \_\_\_\_\_

AIA#

Item: \_\_\_\_\_

Location: \_\_\_\_\_

SIS#

Approved: \_\_\_\_\_

## RID PASS-THRU REFRIGERATORS

RID18HC Half Glass Door Pass-Thru Bottom Mount  
Hydrocarbon Series

**MODELS:**  
RID18HC-HG-26BO



**RID18HC-HG-26BO**

**3 Year Parts/Labor Warranty  
Additional 4 Year Compressor Warranty**

### CABINET CONSTRUCTION

- Stainless steel exterior and interior
- Full electronic control
- Interior LED Light
- Five (5) shelves standard, long tab clips provided for slanted feature
- "BO" designation for pin/sleeve cord
- One piece grille
- Cartridge style hinges
- 120° hold open feature
- Snap-in magnetic door gasket
- Anti-Microbial door handles
- 3" Heavy duty casters standard
- Maintains temperature between 36° - 38°F

### OPTIONS & ACCESSORIES

- 6" legs optional
- Bottle cartridge kit
- RID18HC-HG-26BO right/left hand hinged door (standard)
- RID18HC-HG-26BO-015 right hand hinged door
- RID18HC-HG-26BO-18 left hand hinged door

### REFRIGERATION SYSTEM

- Refrigeration system uses R290 refrigerant to comply with all environmental concerns
- Automatic, non-electric evaporator
- Epoxy coated evaporator coil

**RID18HC BOTTOM MOUNT REACH-INS: Pass-Thru Series**



3779 Champion Blvd., Winston-Salem, NC 27105  
1-888-845-9800 Fax: 1-336-245-6453  
Beverage-Air.com sales@bevair.com





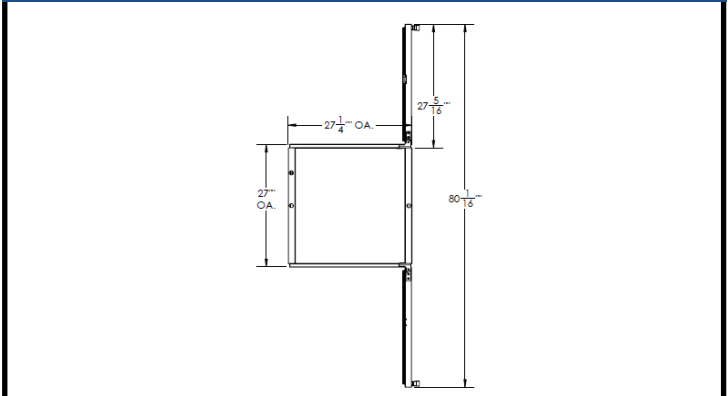
# BEVERAGE-AIR

## Bottom Mount Reach-In Half Glass Door Pass-Thru

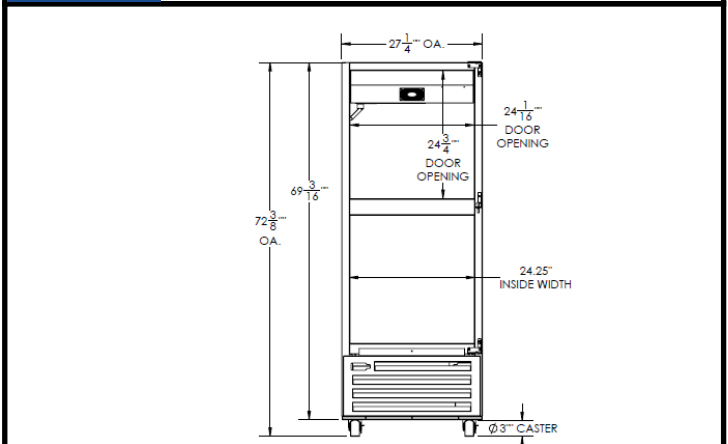
Models: RID18HC-HG-26BO

MODEL	RID18HC-HG-26BO
<b>EXTERNAL DIMENSIONAL DATA</b>	
Width Overall	27 1/4"
Depth Overall with Handles	32 15/16"
Height Overall	72 3/8"
Number of Doors	4
Depth with Door Open 90°	80 1/16"
Door Opening (inches)	24 3/4" x 24 1/16"
Shelf Area	500 3/16"
<b>INTERNAL DIMENSIONAL DATA</b>	
NET Capacity (cubic ft.)	18.38
Internal Width Overall (in)	24 1/4"
Internal Depth Overall (in)	25 1/2"
Internal Height Overall—(in)	Front 53" Rear 46 11/16"
Number of Shelves	5
<b>ELECTRICAL DATA</b>	
Full Load Amperes 115/60/1	5.5
<b>REFRIGERATION DATA</b>	
Horsepower	1/4
Capacity (BTU/Hr)*	1997
<b>WEIGHT DATA</b>	
Gross Weight Lbs (kgs)	422 lbs
Height - Crated	75"
Width - Crated	35"
Depth - Crated	30"

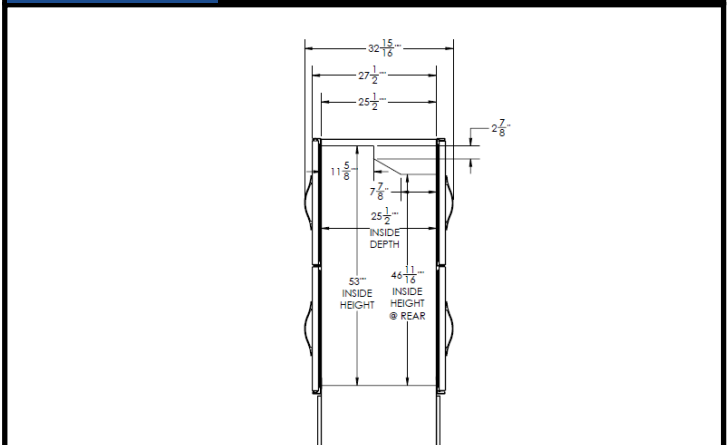
### Model Views



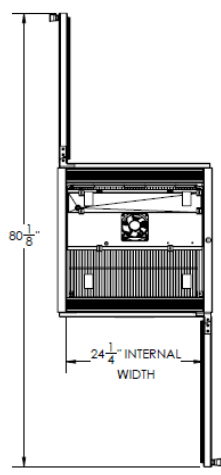
Plan View



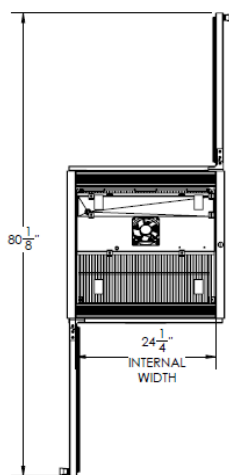
Elevation View



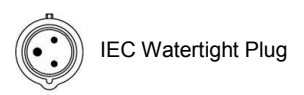
Side View



RID18HC-HS-26BO-015



RID18HC-HS-26BO-18



an Ali Group Company



3779 Champion Blvd., Winston-Salem, NC 27105  
1-888-845-9800 Fax: 1-336-245-6453



# BEVERAGE-AIR

Project: \_\_\_\_\_

AIA#

Item: \_\_\_\_\_

Location: \_\_\_\_\_

SIS#

Approved: \_\_\_\_\_

## RID PASS-THRU REFRIGERATORS

**MODELS:**  
RID18HC-HGS-26

RID18HC Half Solid Half Glass Door Pass-Thru Bottom Mount  
Hydrocarbon Series



RID18HC-HGS-26

**3 Year Parts/Labor Warranty**  
**Additional 4 Year Compressor Warranty**

### CABINET CONSTRUCTION

- Stainless steel exterior and interior
- Full electronic control
- Interior LED Light
- Bottle cartridge kit
- Five (5) shelves standard, long tab clips provided for slanted feature
- One piece grille
- Cartridge style hinges
- 120° hold open feature
- Snap-in magnetic door gasket
- Anti-Microbial door handles
- 3" Heavy duty casters standard
- Maintains temperature between 36° - 38°F

### OPTIONS & ACCESSORIES

- 6" legs optional
- RID18HC-HGS-26 right/left hand hinged door (standard)
- RID18HC-HGS-26-015 right hand hinged door
- RID18HC-HGS-26-18 left hand hinged door

### REFRIGERATION SYSTEM

- Refrigeration system uses R290 refrigerant to comply with all environmental concerns
- Automatic, non-electric evaporator
- Epoxy coated evaporator coil

RID18HC BOTTOM MOUNT REACH-INS: Pass-Thru Series



3779 Champion Blvd., Winston-Salem, NC 27105  
1-888-845-9800 Fax: 1-336-245-6453  
Beverage-Air.com sales@bevair.com

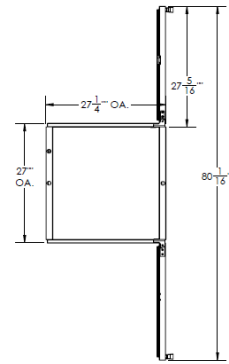


# BEVERAGE-AIR

## Bottom Mount Reach-In Half Solid Half Glass Door Pass-Thru Models: RID18HC-HGS-26

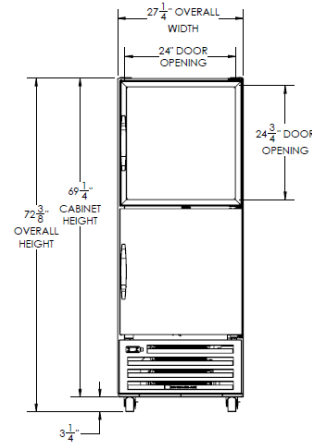
MODEL	RID18HC-HGS-26
<b>EXTERNAL DIMENSIONAL DATA</b>	
Width Overall	27 1/4"
Depth Overall with Handles	32 5/8"
Height Overall with Casters	72 3/8"
Number of Doors	4
Depth with Door Open 90°	80 1/16"
Door Opening (inches)	24" x 24 3/4"
Shelf Area	500 3/16"
<b>INTERNAL DIMENSIONAL DATA</b>	
NET Capacity (cubic ft.)	18.38
Internal Width Overall (in)	24 1/4"
Internal Depth Overall (in)	25 1/8"
Internal Height Overall—(in)	Max 53" Min 46 5/8"
Number of Shelves	5
<b>ELECTRICAL DATA</b>	
Full Load Amperes 115/60/1	5.5
<b>REFRIGERATION DATA</b>	
Horsepower	1/4
Capacity (BTU/Hr)*	1997
<b>WEIGHT DATA</b>	
Gross Weight Lbs	422 lbs
Height - Crated	75"
Width - Crated	35"
Depth - Crated	30"

### Model Views

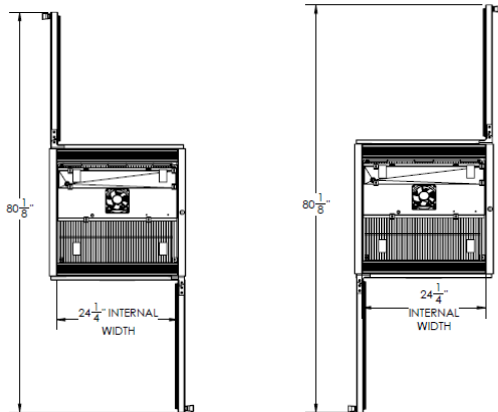


### Plan View

RID18HC-HGS-26



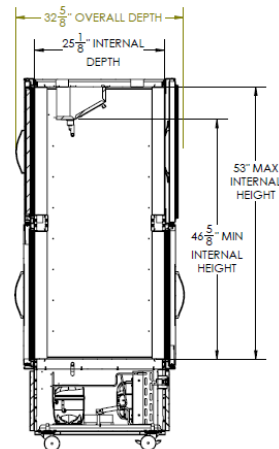
### Elevation View



RID18HC-HGS-26-015

RID18HC-HGS-26-18

### Side View



### ELECTRICAL CONNECTION

Units pre-wired at factory and include 8' long cord and plug set.



115/60/1  
NEMA-5-15P



an Ali Group Company



The Spirit of Excellence

3779 Champion Blvd., Winston-Salem, NC 27105  
1-888-845-9800 Fax: 1-336-245-6453



# BEVERAGE-AIR

Project: \_\_\_\_\_

AIA#

Item: \_\_\_\_\_

Location: \_\_\_\_\_

SIS#

Approved: \_\_\_\_\_

## RID PASS-THRU REFRIGERATORS

RID18HC Half Solid Half Glass Door Pass-Thru Bottom Mount  
Hydrocarbon Series

**MODELS:**  
RID18HC-HGS-26BO



RID18HC-HGS-26BO

**3 Year Parts/Labor Warranty**  
**Additional 4 Year Compressor Warranty**

### CABINET CONSTRUCTION

- Stainless steel exterior and interior
- Full electronic control
- Interior LED Light
- Five (5) shelves standard, long tab clips provided for slanted feature
- "BO" designation for pin/sleeve cord
- One piece grille
- Cartridge style hinges
- 120° hold open feature
- Snap-in magnetic door gasket
- Anti-Microbial door handles
- 3" Heavy duty casters standard
- Maintains temperature between 36° - 38°F

### OPTIONS & ACCESSORIES

- 6" legs optional
- Bottle cartridge kit
- RID18HC-HGS-26BO right/left hand hinged door (standard)
- RID18HC-HGS-26BO-015 right hand hinged door
- RID18HC-HGS-26BO-18 left hand hinged door

### REFRIGERATION SYSTEM

- Refrigeration system uses R290 refrigerant to comply with all environmental concerns
- Automatic, non-electric evaporator
- Epoxy coated evaporator coil

RID18HC BOTTOM MOUNT REACH-INS: Pass-Thru Series



3779 Champion Blvd., Winston-Salem, NC 27105  
1-888-845-9800 Fax: 1-336-245-6453  
Beverage-Air.com sales@bevair.com



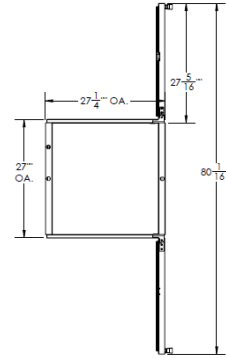
# BEVERAGE-AIR

## Bottom Mount Reach-In Half Solid Half Glass Door Pass-Thru

Models: RID18HC-HGS-26BO

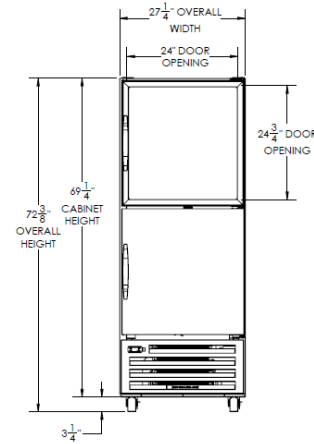
MODEL	RID18HC-HGS-26BO
<b>EXTERNAL DIMENSIONAL DATA</b>	
Width Overall	27 1/4"
Depth Overall with Handles	32 5/8"
Height Overall with Casters	72 3/8"
Number of Doors	4
Depth with Door Open 90°	80 1/16"
Door Opening (inches)	24" x 24 3/4"
Shelf Area	500 3/16"
<b>INTERNAL DIMENSIONAL DATA</b>	
NET Capacity (cubic ft.)	18.38
Internal Width Overall (in)	24 1/4"
Internal Depth Overall (in)	25 1/8"
Internal Height Overall—(in)	Max 53" Min 46 5/8"
Number of Shelves	5
<b>ELECTRICAL DATA</b>	
Full Load Amperes 115/60/1	5.5
<b>REFRIGERATION DATA</b>	
Horsepower	1/4
Capacity (BTU/Hr)*	1991
<b>WEIGHT DATA</b>	
Gross Weight Lbs	422 lbs
Height - Crated	76"
Width - Crated	30"
Depth - Crated	36"

### Model Views

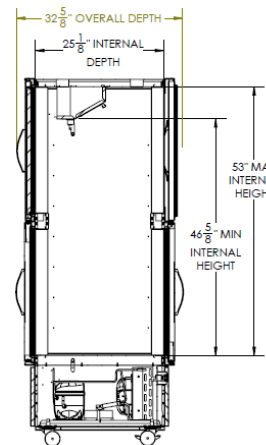


### Plan View

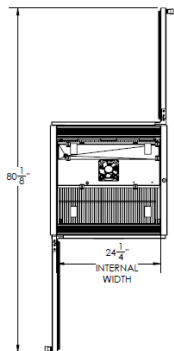
RID18HC-HGS-26BO



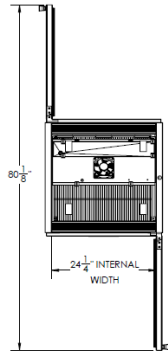
### Elevation View



### Side View



RID18HC-HGS-26BO-015



RID18HC-HGS-26BO-18



IEC Watertight Plug



an Ali Group Company



The Spirit of Excellence

3779 Champion Blvd., Winston-Salem, NC 27105  
1-888-845-9800 Fax: 1-336-245-6453



# BEVERAGE-AIR

Project: \_\_\_\_\_

AIA#

Item: \_\_\_\_\_

Location: \_\_\_\_\_

SIS#

Approved: \_\_\_\_\_

## RID PASS-THRU REFRIGERATORS

RID18HC Half Solid Door Pass-Thru Bottom Mount  
Hydrocarbon Series

**MODELS:**  
RID18HC-HS-26BO



RID18HC-HS-26BO

**3 Year Parts/Labor Warranty**  
**Additional 4 Year Compressor Warranty**

### CABINET CONSTRUCTION

- Stainless steel exterior and interior
- Full electronic control
- Interior LED Light
- Five (5) shelves standard, long tab clips provided for slanted feature
- "BO" designation for pin/sleeve cord
- One piece grille
- Cartridge style hinges
- 120° hold open feature
- Snap-in magnetic door gasket
- Anti-Microbial door handles
- 3" Heavy duty casters standard
- Maintains temperature between 36° - 38°F

### OPTIONS & ACCESSORIES

- 6" legs optional
- Bottle cartridge kit
- RID18HC-HS-26BO right/left hand hinged door (standard)
- RID18HC-HS-26BO-015 right hand hinged door
- RID18HC-HS-26BO-18 left hand hinged door

### REFRIGERATION SYSTEM

- Refrigeration system uses R290 refrigerant to comply with all environmental concerns
- Automatic, non-electric evaporator
- Epoxy coated evaporator coil

RID18HC BOTTOM MOUNT REACH-INS: Pass-Thru Series



3779 Champion Blvd., Winston-Salem, NC 27105  
1-888-845-9800 Fax: 1-336-245-6453  
Beverage-Air.com sales@bevair.com



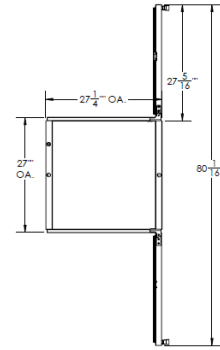
# BEVERAGE-AIR

## Bottom Mount Reach-In Half Solid Door Pass-Thru

Models: RID18HC-HS-26BO

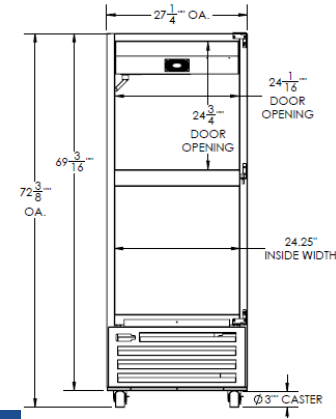
MODEL	RID18HC-HS-26BO
<b>EXTERNAL DIMENSIONAL DATA</b>	
Width Overall	27 1/4"
Depth Overall with Handle	32 15/16"
Height Overall	72 3/8"
Number of Doors	4
Depth with Door Open 90°	80 1/16"
Door Opening (inches)	24 3/4" x 24 1/16"
Shelf Area	500 3/16"
<b>INTERNAL DIMENSIONAL DATA</b>	
NET Capacity (cubic ft.)	18.38
Internal Width Overall (in)	24 1/4"
Internal Depth Overall (in)	25 1/2"
Internal Height Overall—(in)	Front 53" Rear 46 11/16"
Number of Shelves	5
<b>ELECTRICAL DATA</b>	
Full Load Amperes 115/60/1	5.5
<b>REFRIGERATION DATA</b>	
Horsepower	1/4
Capacity (BTU/Hr)*	1997
<b>WEIGHT DATA</b>	
Gross Weight Lbs (kgs)	420 lbs
Height - Crated	76"
Width - Crated	30"
Depth - Crated	35"

### Model Views

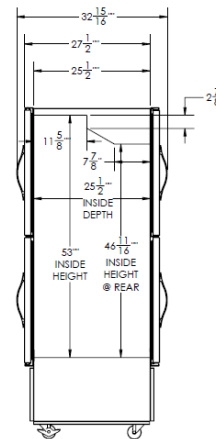


RID18HC-HS-26BO

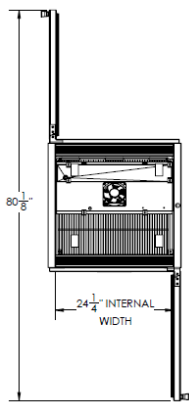
### Plan View



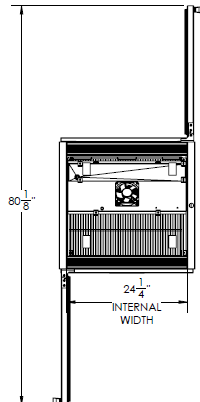
### Elevation View



### Side View



RID18HC-HS-26BO-015



RID18HC-HS-26BO-18



IEC Watertight Plug



an Ali Group Company



The Spirit of Excellence

3779 Champion Blvd., Winston-Salem, NC 27105  
1-888-845-9800 Fax: 1-336-245-6453



# BEVERAGE-AIR

Project: \_\_\_\_\_

AIA#

Item: \_\_\_\_\_

Location: \_\_\_\_\_

SIS#

Approved: \_\_\_\_\_

## UCR SHALLOW DEPTH UNDERCOUNTER

UCR20HC Solid Door Undercounter Refrigerator  
Hydrocarbon Series

**MODELS:  
UCR20HC**



UCR20HC

**3 Year Parts/Labor Warranty  
Additional 4 Year Compressor Warranty**

### CABINET CONSTRUCTION

- Stainless steel front, sides, top (*galvanized back & bottom*)
- Interior liner is made of corrosion resistant aluminum
- Full electronic control
- Self-closing doors with 120° Stay-open feature, on cartridge style hinges
- Door opening includes low wattage, anti-condensate heaters
- Easy door removal for service and cleaning
- Magnetic gasket attached to each door for positive seal
- Painted aluminum door handle
- 6" Casters, 2 with brakes standard
- Two ( 2) epoxy-coated steel wire shelves standard
- Field reversible door

### OPTIONS & ACCESSORIES

- Stainless steel interior available
- 6" Legs
- 3" Casters
- Low profile caster
- Stainless steel back & grille
- Stacking collar
- Foot pedal door opener

### REFRIGERATION SYSTEM

- Refrigeration system uses R290 refrigerant to comply with all environmental concerns
- Automatic, non-electric evaporator
- System is serviceable from rear
- Epoxy coated evaporator coil

UCR20AHC Undercounter Refrigerator: Food Prep Series



3779 Champion Blvd., Winston-Salem, NC 27105  
1-888-845-9800 Fax: 1-336-245-6453  
Beverage-Air.com sales@bevair.com





# BEVERAGE-AIR

MODEL	UCR20HC
<b>EXTERNAL DIMENSIONAL DATA</b>	
Width Overall	20"
Depth Overall with Handle & Bumper	24 1/2"
Height Overall with 6" Casters	31 1/8"
Number of Doors	1
Depth with Door Open 90 °	40 3/4"
Door Opening (in)	15 5/8" x 18 1/8"
Shelf Area (sq. in)	186 1/2"
<b>INTERNAL DIMENSIONAL DATA</b>	
NET Capacity (cubic ft.)	2.28
Internal Width Overall (in)	16"
Internal Depth Overall (in)	8 1/4"
Internal Height Overall (in)	19 1/2"
Number of Shelves	2
<b>ELECTRICAL DATA</b>	
Full Load Amperes 115/60/1	2
<b>REFRIGERATION DATA</b>	
Horsepower	1/6
Capacity (BTU/Hr)*	1010
<b>WEIGHT DATA</b>	
Gross Weight (Created lbs)	119 lbs
Height - Crated	35"
Width - Crated	23"
Depth - Crated	23"

## Undercounter Refrigerators - Shallow Depth Models: UCR20HC

**Model Views**

**Plan View**

**Elevation View**

**Side View**

### ELECTRICAL CONNECTION



115/60/1  
NEMA-5-15P

Units pre-wired at factory and include 8' long cord and plug set.



an Ali Group Company



The Spirit of Excellence

3779 Champion Blvd., Winston-Salem, NC 27105  
1-888-845-9800 Fax: 1-336-245-6453



# BEVERAGE-AIR

Project: \_\_\_\_\_

AIA#

Item: \_\_\_\_\_

Location: \_\_\_\_\_

SIS#

Approved: \_\_\_\_\_

## WTF WORKTOP FREEZER

WTF27AHC Solid Door

Hydrocarbon Series

MODELS:

WTF27AHC-23



WTF27AHC-23

**3 Year Parts/Labor Warranty**  
**Additional 4 Year Compressor Warranty**

### CABINET CONSTRUCTION

- Stainless steel front, sides, door(s), *(galvanized back & bottom)*
- Stainless steel top
- Interior liner is made of corrosion resistant aluminum
- Full electronic control
- Interior thermometer is standard
- Self-closing doors with 120° Stay-open feature, on cartridge style hinges
- Magnetic gasket attached to each door for positive seal
- Painted aluminum door handle
- 4" High removable backsplash
- 3" Casters
- Two epoxy-coated steel wire shelves standard
- Field-reversible door

### OPTIONS & ACCESSORIES

- Stainless steel back, grille
- Drawer option
- Glass door
- Shelf divider
- 6" Casters or legs
- Low profile casters
- Cutting board
- Foot pedal door opener

### REFRIGERATION SYSTEM

- Refrigeration system uses R290 refrigerant to comply with all environmental concerns
- Automatic, non-electric evaporator
- System is serviceable from rear
- Epoxy coated evaporator coil

WTF27AHC Worktop Freezer: Food Prep Series



3779 Champion Blvd., Winston-Salem, NC 27105  
1-888-845-9800 Fax: 1-336-245-6453  
Beverage-Air.com sales@bevair.com



# BEVERAGE-AIR

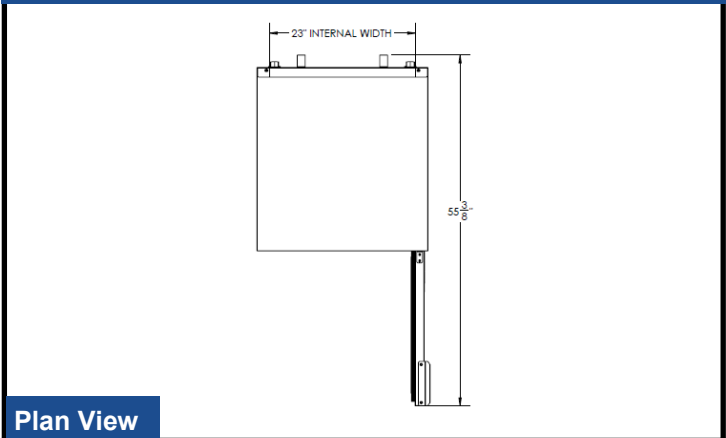
## Worktop Freezer

### Solid Door

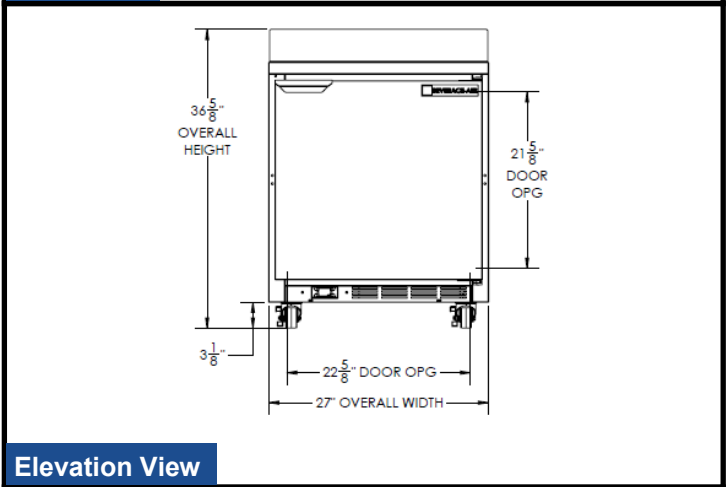
Models: WTF27AHC-23

MODEL	WTF27AHC-23
<b>EXTERNAL DIMENSIONAL DATA</b>	
Width Overall	27"
Depth Overall with Handle & Bumper	32 1/8"
Height Overall with 3" Casters	36 5/8"
Number of Doors	1
Depth with Door Open 90 °	55 3/8"
Solid Door Opening (in)	22 5/8" x 21 5/8"
Shelf Area	Upper 389 3/8 Lower 322 5/8
<b>INTERNAL DIMENSIONAL DATA</b>	
NET Capacity (cubic ft.)	6.03
Internal Width Overall (in)	23"
Internal Depth Overall (in)	15 1/2"
Internal Height Overall (in)	23"
Number of Shelves	2
<b>ELECTRICAL DATA</b>	
Full Load Amperes 115/60/1	6
<b>REFRIGERATION DATA</b>	
Horsepower	1/2
Capacity (BTU/Hr)*	1418
<b>WEIGHT DATA</b>	
Gross Weight	186 lbs
Height - Crated	36"
Width - Crated	30"
Depth - Crated	32"

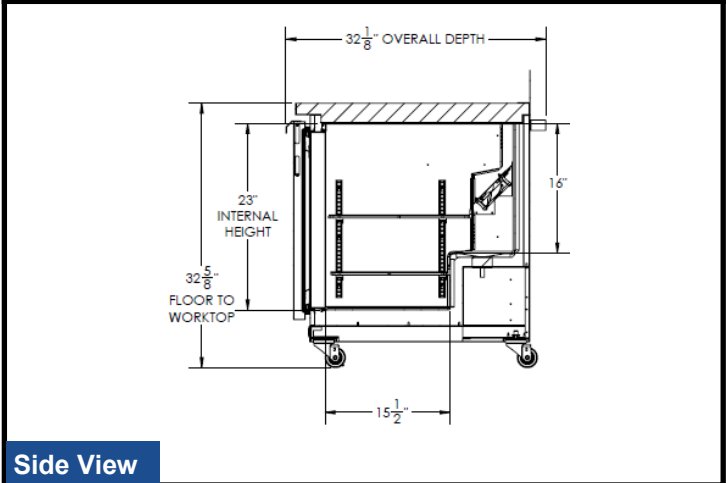
### Model Views



Plan View



Elevation View



Side View

### ELECTRICAL CONNECTION



115/60/1  
NEMA-5-15P

Units pre-wired at factory and include 8' long cord and plug set.



an Ali Group Company



3779 Champion Blvd., Winston-Salem, NC 27105  
1-888-845-9800 Fax: 1-336-245-6453



# BEVERAGE-AIR

Project: \_\_\_\_\_

AIA#

Item: \_\_\_\_\_

Location: \_\_\_\_\_

SIS#

Approved: \_\_\_\_\_

## WTF WORKTOP 32" Base

### WTF48AHC Worktop Freezer

### Hydrocarbon Series

**MODELS:**

**WTF48AHC**



WTF48AHC

**3 Year Parts/Labor Warranty**  
**Additional 4 Year Compressor Warranty**

### CABINET CONSTRUCTION

- Stainless steel front, sides, door(s), (*galvanized steel back & bottom*)
- Interior liner is made of corrosion resistant aluminum
- Full electronic control
- 2 1/2" Stainless steel worktop for added durability
- Built-in backsplash
- 100% Front breathing
- Self-closing doors with 120° Stay-open feature, on cartridge style hinges
- Easy door removal for service and cleaning
- Magnetic gasket attached to each door for positive seal
- Painted aluminum door handle
- 6" Casters, two with brakes standard
- Two epoxy-coated steel wire shelves per section standard
- Field-reversible doors

### OPTIONS & ACCESSORIES

- Stainless steel back and grille
- Drawers models
- Door with locks
- 6" Legs
- 3" Casters
- Low profile casters
- Cutting board option
- Shelf dividers
- Overshelf kits
- Foot pedal door opener

### REFRIGERATION SYSTEM

- Refrigeration system uses R290 refrigerant to comply with all environmental concerns
- Automatic, non-electric evaporator
- System is serviceable from rear
- Epoxy coated evaporator coil

WTF48AHC 32" Base Freezer: Food Prep Series



3779 Champion Blvd., Winston-Salem, NC 27105

1-888-845-9800 Fax: 1-336-245-6453

Beverage-Air.com sales@bevair.com



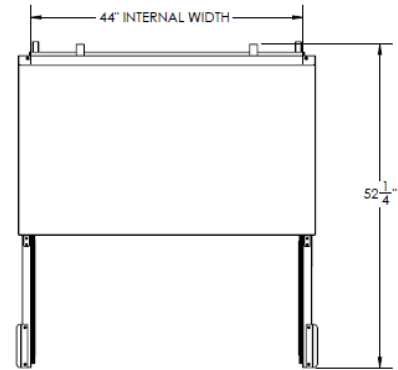
# BEVERAGE-AIR

MODEL	WTF48AHC
<b>EXTERNAL DIMENSIONAL DATA</b>	
Width Overall	48"
Depth Overall with Handle & Bumper	32"
Height Overall with 6" Casters	39 5/8"
Number of Doors	2
Depth with Door Open 90 °	52 1/4"
Solid Door Opening (in)	19 5/8 x 21 5/8"
Shelf Area (sq. in)	Upper 344 33/64" Lower 302 3/4"
<b>INTERNAL DIMENSIONAL DATA</b>	
NET Capacity (cubic ft.)	11.04
Internal Width Overall (in)	44"
Internal Depth Overall (in)	15 3/8"
Internal Height Overall (in)	23"
Number of Shelves	4
<b>ELECTRICAL DATA</b>	
Full Load Amperes 115/60/1	7
<b>REFRIGERATION DATA</b>	
Horsepower	1/2
Capacity (BTU/Hr)*	1861
<b>WEIGHT DATA</b>	
Gross Weight	294 lbs
Height - Crated	43 1/2"
Width - Crated	30"
Depth - Crated	32 1/4"

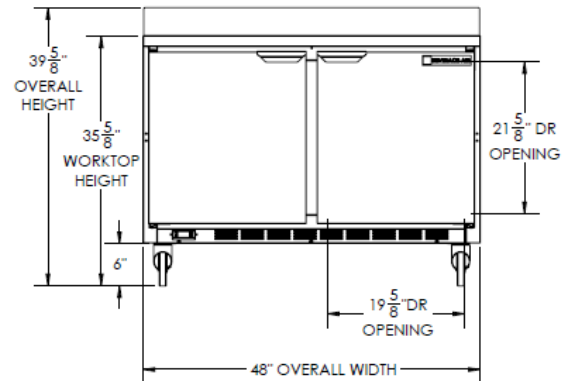
## Worktop Freezer - 32" Base

Models: WTF48AHC

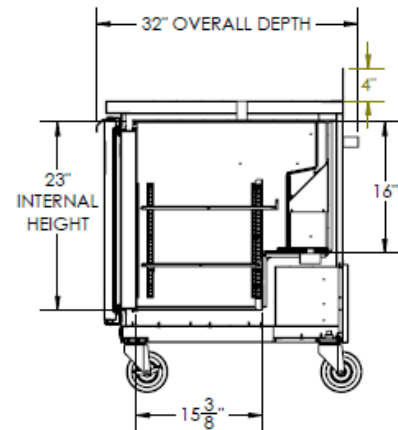
### Model Views



Plan View



Elevation View



Side View

### ELECTRICAL CONNECTION



115/60/1  
NEMA-5-15P

Units pre-wired at factory and include 8' long cord and plug set.



an Ali Group Company



The Spirit of Excellence

3779 Champion Blvd., Winston-Salem, NC 27105  
1-888-845-9800 Fax: 1-336-245-6453



# BEVERAGE-AIR

Project: \_\_\_\_\_

AIA#

Item: \_\_\_\_\_

Location: \_\_\_\_\_

SIS#

Approved: \_\_\_\_\_

## WTR WORKTOP REFRIGERATOR

WTR27AHC Solid Door

Hydrocarbon Series

MODELS:

WTR27AHC-23-53

WTR27AHC Worktop Refrigerator: Food Prep Series

**3 Year Parts/Labor Warranty**  
**Additional 4 Year Compressor Warranty**



WTR27AHC-23-53

### CABINET CONSTRUCTION

- Stainless steel front, sides, door(s), (galvanized back & bottom)
- Stainless steel top
- Interior liner is made of corrosion resistant aluminum
- Full electronic control
- Interior thermometer is standard
- Self-closing doors with 120° Stay-open feature, on cartridge style hinges
- Magnetic gasket attached to each door for positive seal
- Painted aluminum door handle
- 4" High removable backsplash
- 3" Casters
- Two epoxy-coated steel wire shelves standard
- Field-reversible door

### OPTIONS & ACCESSORIES

- Stainless steel back, grille
- Shelf divider
- 6" Casters or legs
- Low profile casters
- Cutting board
- Foot pedal door opener

### REFRIGERATION SYSTEM

- Refrigeration system uses R290 refrigerant to comply with all environmental concerns
- Automatic, non-electric evaporator
- System is serviceable from rear
- Epoxy coated evaporator coil



3779 Champion Blvd., Winston-Salem, NC 27105  
1-888-845-9800 Fax: 1-336-245-6453  
Beverage-Air.com sales@bevair.com



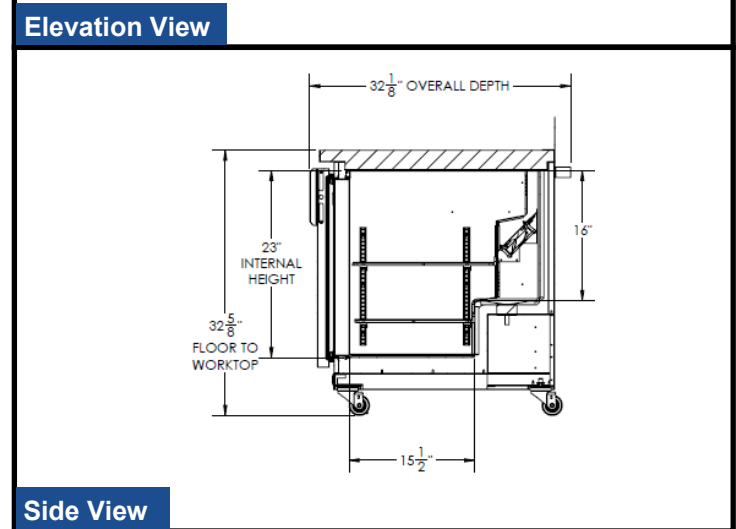
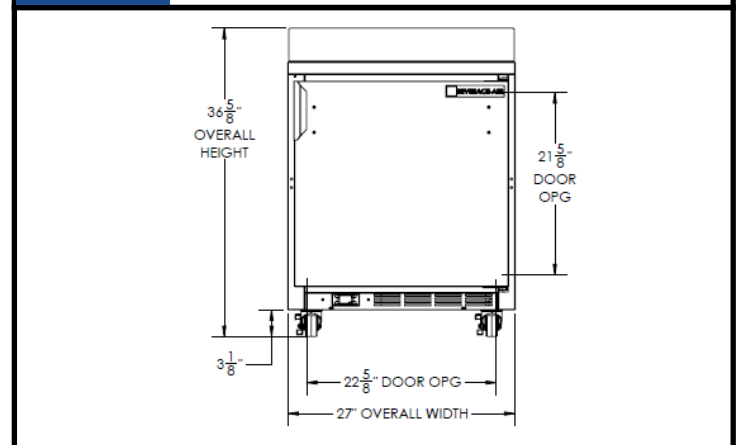
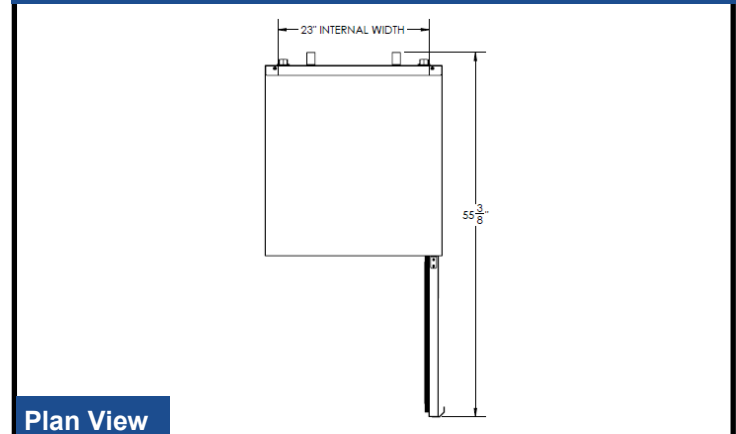
# BEVERAGE-AIR

MODEL	WTR27AHC-23-53
<b>EXTERNAL DIMENSIONAL DATA</b>	
Width Overall	27"
Depth Overall with Handle & Bumper	32 1/8"
Height Overall with 3" Casters	36 5/8"
Number of Doors	1
Depth with Door Open 90 °	55 3/8"
Solid Door Opening (in)	22 5/8" x 21 5/8"
Shelf Area	Upper 389 3/8 Lower 322 5/8
<b>INTERNAL DIMENSIONAL DATA</b>	
NET Capacity (cubic ft.)	5.97
Internal Width Overall (in)	23"
Internal Depth Overall (in)	15 1/2"
Internal Height Overall (in)	23"
Number of Shelves	2
<b>ELECTRICAL DATA</b>	
Full Load Amperes 115/60/1	1.82
<b>REFRIGERATION DATA</b>	
Horsepower	1/6
Capacity (BTU/Hr)*	994
<b>WEIGHT DATA</b>	
Gross Weight	170 lbs
Height - Crated	35"
Width - Crated	30"
Depth - Crated	31 1/2"

## Worktop Refrigerator Solid Door

Models: WTR27AHC-23-53

### Model Views



### ELECTRICAL CONNECTION



115/60/1  
NEMA-5-15P

Units pre-wired at factory and include 8' long cord and plug set.



an Ali Group Company



The Spirit of Excellence

3779 Champion Blvd., Winston-Salem, NC 27105  
1-888-845-9800 Fax: 1-336-245-6453



# BEVERAGE-AIR

Project: \_\_\_\_\_

AIA#

Item: \_\_\_\_\_

Location: \_\_\_\_\_

SIS#

Approved: \_\_\_\_\_

## WTR WORKTOP REFRIGERATOR

**MODELS:**  
**WTR27AHC-SR**

WTR27AHC Solid Door with Speed Rail, Whip Cream Holder & Milk Holes  
Hydrocarbon Series



WTR27AHC-SR

**3 Year Parts/Labor Warranty**  
**Additional 4 Year Compressor Warranty**

### CABINET CONSTRUCTION

- Stainless steel front, sides, door(s), *(galvanized back & bottom)*
- Stainless steel top
- Interior liner is made of corrosion resistant aluminum
- Full electronic control
- Interior thermometer is standard
- Self-closing doors with 120° Stay-open feature, on cartridge style hinges
- Magnetic gasket attached to each door for positive seal
- Painted aluminum door handle
- 4" High removable backsplash
- Whip Cream Holder
- Speed Rail
- Milk Holes
- 6" Casters, 2 with brakes standard
- Two epoxy-coated steel wire shelves standard
- Field-reversible door

### OPTIONS & ACCESSORIES

- Stainless steel back, grille
- Shelf divider
- 6" Legs
- 3" Casters
- Low profile casters
- Cutting board
- Foot pedal door opener

### REFRIGERATION SYSTEM

- Refrigeration system uses R290 refrigerant to comply with all environmental concerns
- Automatic, non-electric evaporator
- System is serviceable from rear
- Epoxy coated evaporator coil

WTR27AHC Worktop Refrigerator: Food Prep Series



3779 Champion Blvd., Winston-Salem, NC 27105  
1-888-845-9800 Fax: 1-336-245-6453  
Beverage-Air.com sales@bevair.com





# BEVERAGE-AIR

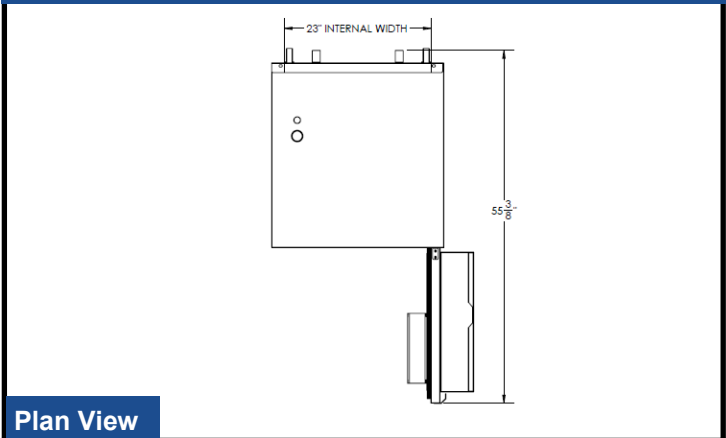
## Worktop Refrigerator

### Solid Door

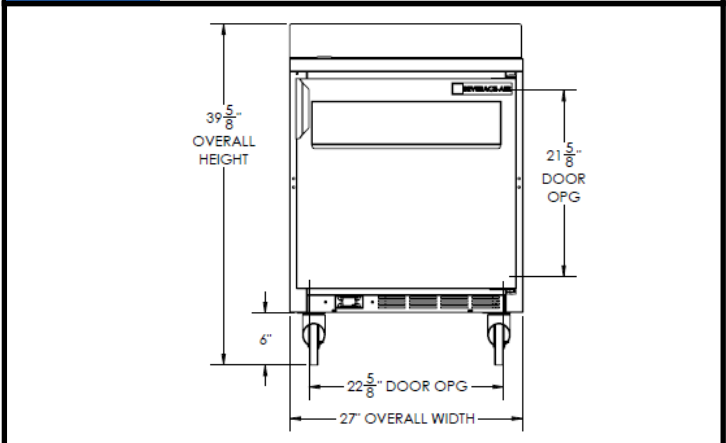
Models: WTR27AHC-SR

MODEL	WTR27AHC-SR
<b>EXTERNAL DIMENSIONAL DATA</b>	
Width Overall	27"
Depth Overall with Handle & Bumper	36 1/2"
Height Overall with 6" Casters	39 5/8"
Number of Doors	1
Depth with Door Open 90 °	55 3/8"
Solid Door Opening (in)	22 5/8" x 21 5/8"
Shelf Area	Upper 389 3/8 Lower 322 5/8
<b>INTERNAL DIMENSIONAL DATA</b>	
NET Capacity (cubic ft.)	5.97
Internal Width Overall (in)	23"
Internal Depth Overall (in)	15 1/2"
Internal Height Overall (in)	23"
Number of Shelves	2
<b>ELECTRICAL DATA</b>	
Full Load Amperes 115/60/1	1.82
<b>REFRIGERATION DATA</b>	
Horsepower	1/6
Capacity (BTU/Hr)*	994
<b>WEIGHT DATA</b>	
Gross Weight	172 lbs
Height - Crated	35"
Width - Crated	30"
Depth - Crated	32"

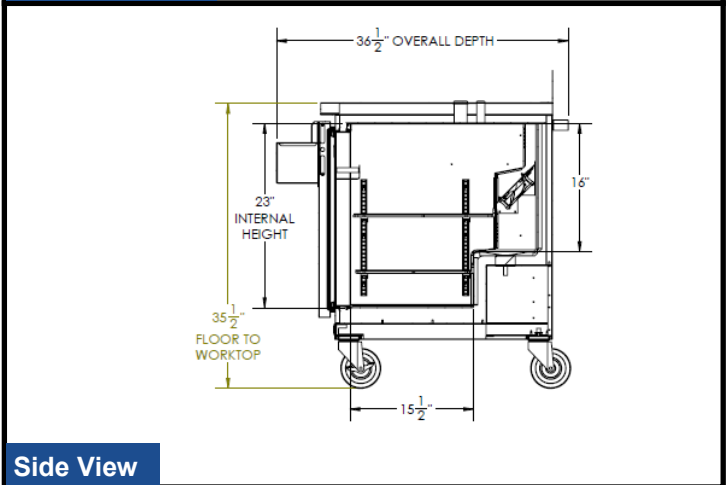
### Model Views



Plan View



Elevation View



Side View

### ELECTRICAL CONNECTION



115/60/1  
NEMA-5-15P

Units pre-wired at factory and include 8' long cord and plug set.



an Ali Group Company



The Spirit of Excellence

3779 Champion Blvd., Winston-Salem, NC 27105  
1-888-845-9800 Fax: 1-336-245-6453



# BEVERAGE-AIR

Project: \_\_\_\_\_

AIA#

Item: \_\_\_\_\_

Location: \_\_\_\_\_

SIS#

Approved: \_\_\_\_\_

## WTR WORKTOP 32" Base

### WTR48AHC Worktop Refrigerator

### Hydrocarbon Series

**MODELS:**  
**WTR48AHC**

WTR48AHC 32" Base Refrigerator: Food Prep Series

**3 Year Parts/Labor Warranty**  
**Additional 4 Year Compressor Warranty**



WTR48AHC

### CABINET CONSTRUCTION

- Stainless steel front, sides, door(s), (*galvanized steel back & bottom*)
- Interior liner is made of corrosion resistant aluminum
- Full electronic control
- Interior thermometer is standard
- Stainless steel worktop for added durability
- Removable backsplash
- 100% Front breathing
- Self-closing doors with 120° Stay-open feature, on cartridge style hinges
- Easy door removal for service and cleaning
- Magnetic gasket attached to each door for positive seal
- Painted aluminum door handle(s)
- 6" Casters, two with brakes standard
- Two epoxy-coated steel wire shelves per section standard
- Field-reversible doors

### OPTIONS & ACCESSORIES

- Stainless steel back and grille
- Stainless steel
- Drawers models
- Door with locks
- 6" Legs
- 3" Casters
- Low profile casters
- Cutting board option
- Shelf dividers
- Overshelf kits
- Foot pedal door opener

### REFRIGERATION SYSTEM

- Refrigeration system uses R290 refrigerant to comply with all environmental concerns
- Automatic, non-electric evaporator
- System is serviceable from rear
- Epoxy coated evaporator coil



3779 Champion Blvd., Winston-Salem, NC 27105  
1-888-845-9800 Fax: 1-336-245-6453  
Beverage-Air.com sales@bevair.com



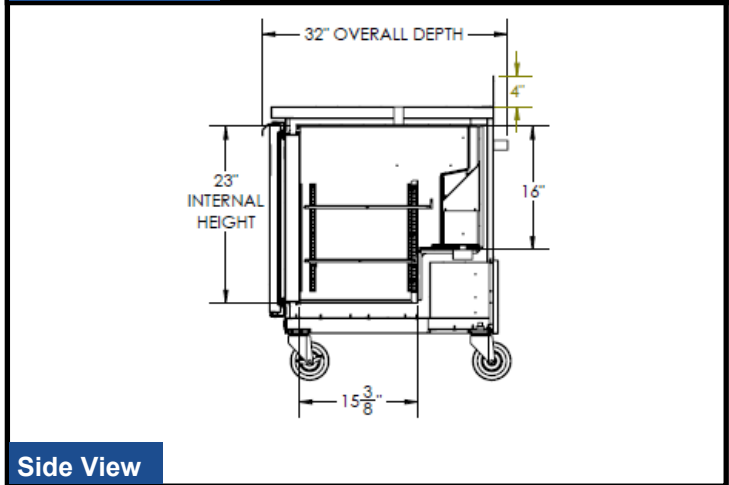
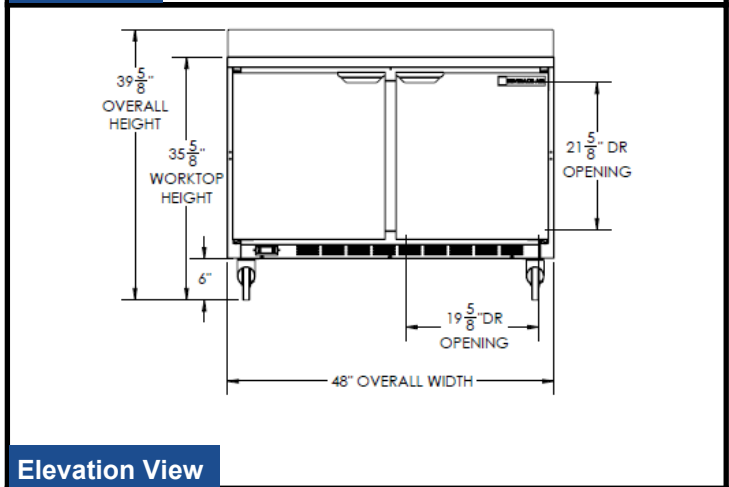
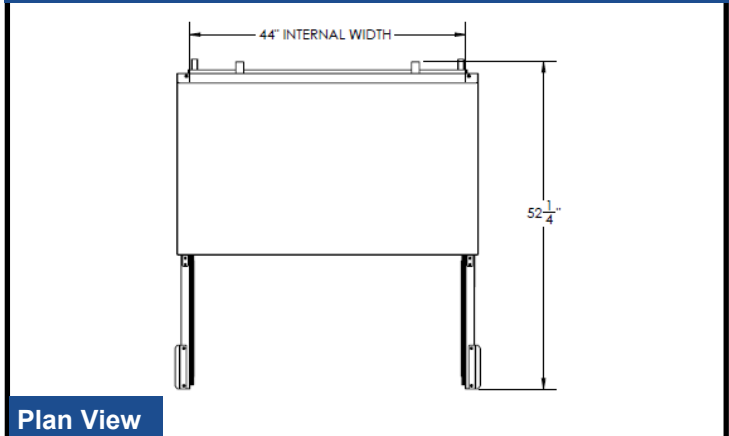
# BEVERAGE-AIR

## Worktop Refrigerator - 32" Base

Models: WTR48AHC

MODEL	WTR48AHC
<b>EXTERNAL DIMENSIONAL DATA</b>	
Width Overall	48"
Depth Overall with Handle & Bumper	32"
Height Overall with 6" Casters	39 5/8"
Number of Doors	2
Depth with Door Open 90 °	52 1/4"
Solid Door Opening (in)	19 5/8" x 21 5/8"
Shelf Area (sq. in)	Upper 344 33/64" Lower 302 3/4"
<b>INTERNAL DIMENSIONAL DATA</b>	
NET Capacity (cubic ft.)	11.82
Internal Width Overall (in)	44"
Internal Depth Overall (in)	15 3/8"
Internal Height Overall (in)	23"
Number of Shelves	4
<b>ELECTRICAL DATA</b>	
Full Load Amperes 115/60/1	2
<b>REFRIGERATION DATA</b>	
Horsepower	1/6
Capacity (BTU/Hr)*	994
<b>WEIGHT DATA</b>	
Gross Weight	258 lbs
Height - Crated	36"
Width - Crated	51"
Depth - Crated	33"

### Model Views



### ELECTRICAL CONNECTION



115/60/1  
NEMA-5-15P

Units pre-wired at factory and include 8' long cord and plug set.



an Ali Group Company



The Spirit of Excellence

3779 Champion Blvd., Winston-Salem, NC 27105  
1-888-845-9800 Fax: 1-336-245-6453

2020WVCPO20200124

@beverageair



**888-845-9800**  
**beverage-air.com**

3779 CHAMPION BLVD.  
WINSTON-SALEM, NC 27105  
PHONE: (888) 845-9800 | FAX: (800) 253-5168  
EMAIL: TEAM.FOCUS@ALIREFNA.COM  
WEB: BEVERAGE-AIR.COM

an Ali Group Company



The Spirit of Excellence